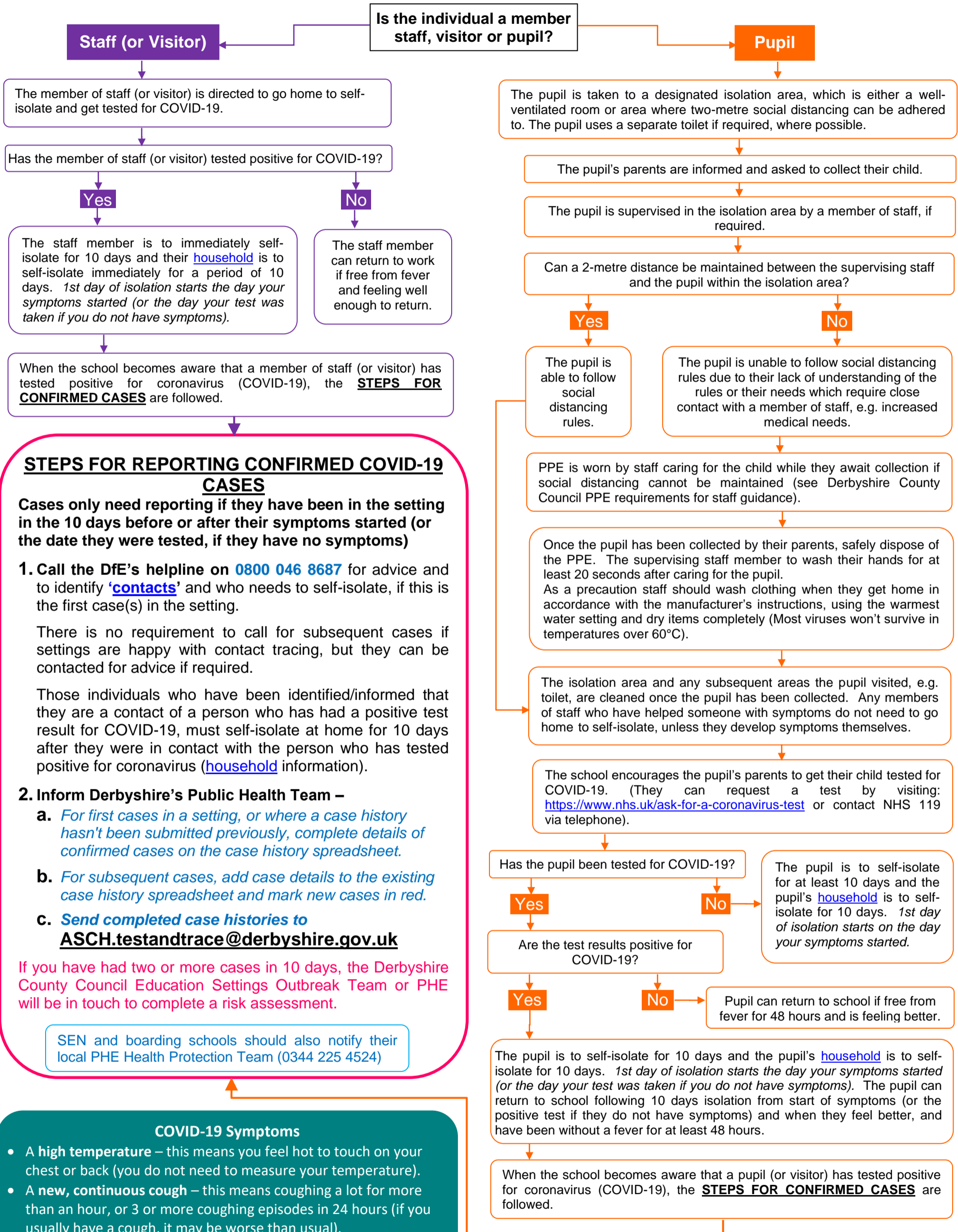


Coronavirus (COVID-19) Symptomatic – Confirmed Case Flowchart



STEPS FOR REPORTING CONFIRMED COVID-19 CASES

Cases only need reporting if they have been in the setting in the 10 days before or after their symptoms started (or the date they were tested, if they have no symptoms)

1. Call the DfE's helpline on **0800 046 8687** for advice and to identify **'contacts'** and who needs to self-isolate, if this is the first case(s) in the setting.

There is no requirement to call for subsequent cases if settings are happy with contact tracing, but they can be contacted for advice if required.

Those individuals who have been identified/informed that they are a contact of a person who has had a positive test result for COVID-19, must self-isolate at home for 10 days after they were in contact with the person who has tested positive for coronavirus ([household](#) information).

2. Inform Derbyshire's Public Health Team –

- For first cases in a setting, or where a case history hasn't been submitted previously, complete details of confirmed cases on the case history spreadsheet.
- For subsequent cases, add case details to the existing case history spreadsheet and mark new cases in red.
- Send completed case histories to ASCH.testandtrace@derbyshire.gov.uk

If you have had two or more cases in 10 days, the Derbyshire County Council Education Settings Outbreak Team or PHE will be in touch to complete a risk assessment.

SEN and boarding schools should also notify their local PHE Health Protection Team (0344 225 4524)

COVID-19 Symptoms

- A **high temperature** – this means you feel hot to touch on your chest or back (you do not need to measure your temperature).
- A **new, continuous cough** – this means coughing a lot for more than an hour, or 3 or more coughing episodes in 24 hours (if you usually have a cough, it may be worse than usual).
- A **loss or change to your sense of smell or taste** – this means you've noticed you cannot smell or taste anything, or things smell or taste different to normal.

We're Here to Help

